



REAL PRO
— ALLIANCE —
JOIN - CONNECT - EARN

[Home Service Contractors](#)

[Professional Services](#)

[Commercial Services](#)

Join with your Local Real Estate Professionals and other Marketing & Business Professionals in recommending Best-In-Class Service Providers, to serve you and other members of your community. Our Trusted & Community Endorsed list of contractors and professionals will provide you with additional income for sponsoring individuals and businesses to the network.



Sign Up Today!

Learn More About These Income Producing Opportunities

Member Benefits

\$ Consumer Cashback

\$ Sponsor Your Friends

\$ Business Connector

Sales and Marketing Team

Market Partner

Market Manager

Corporate Partner

Service Providers

Home Service

Contractors

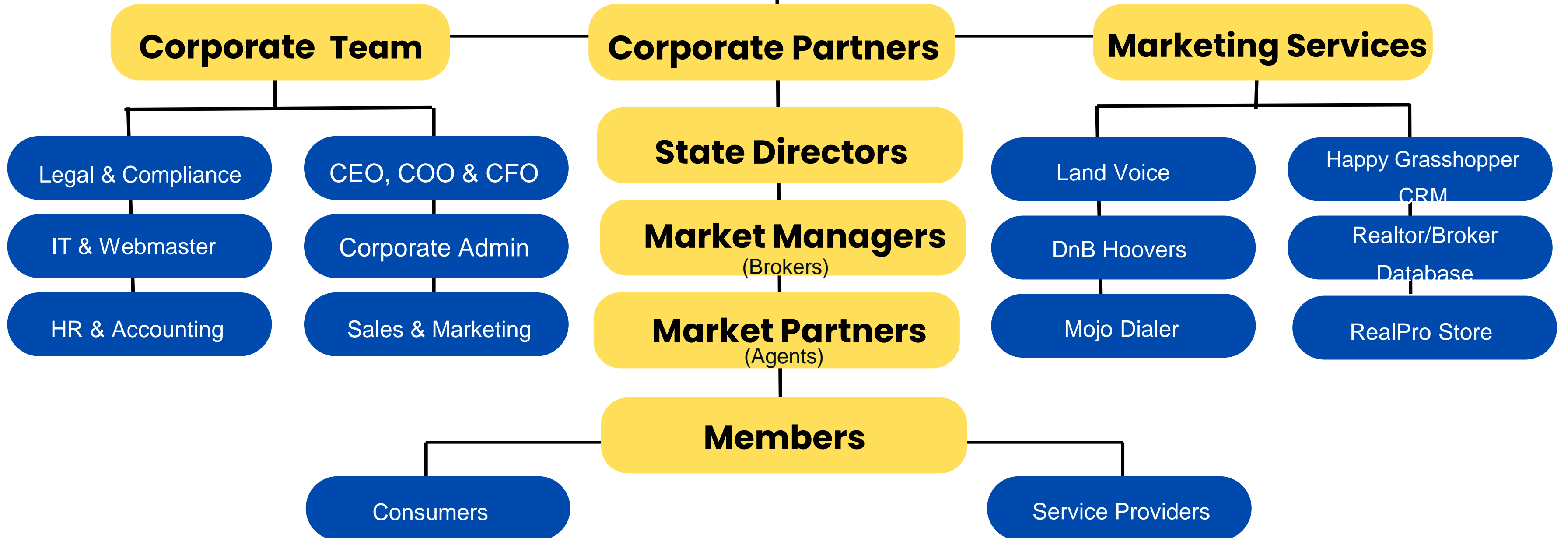
Professional Services

Commercial Services

(All compensation projections are estimates only)



BOARD OF DIRECTORS



Consumer Members

- Exclusive Discounts from our Service Providers in Addition to getting 7% Cash Back from RealPro Income.

Sponsors

- Sponsor your friends into the network and receive a 7% cash back commission match each time they make a purchase in network.

Note: Sponsored Members must enter your Referral ID# when they register.

Business Connector

- Connect Best-In-Class Businesses to join the network & receive a 7% cash back commission match each time anyone in the network does a transaction with the business you connected.

Note: Businesses must enter your Referral ID# when they register.

Service Providers

- Register Your Company/Business & Start Receiving Leads! There are no upfront cost as we get paid, only when you get paid. You choose the % we receive.

Member Benefits

Market Partner

- Sponsor your connections into the network and encourage them to invite others as you build your Consumer Income Tree. Receive a 7% cash back commission match on each purchase done in your Tree.

Market Manager

- Sponsor your Market Partners into the network & encourage them to invite others as you build your Consumer Income Tree. Receive a 7% cash back commission match on each purchase done in your Tree.

Corporate Partner

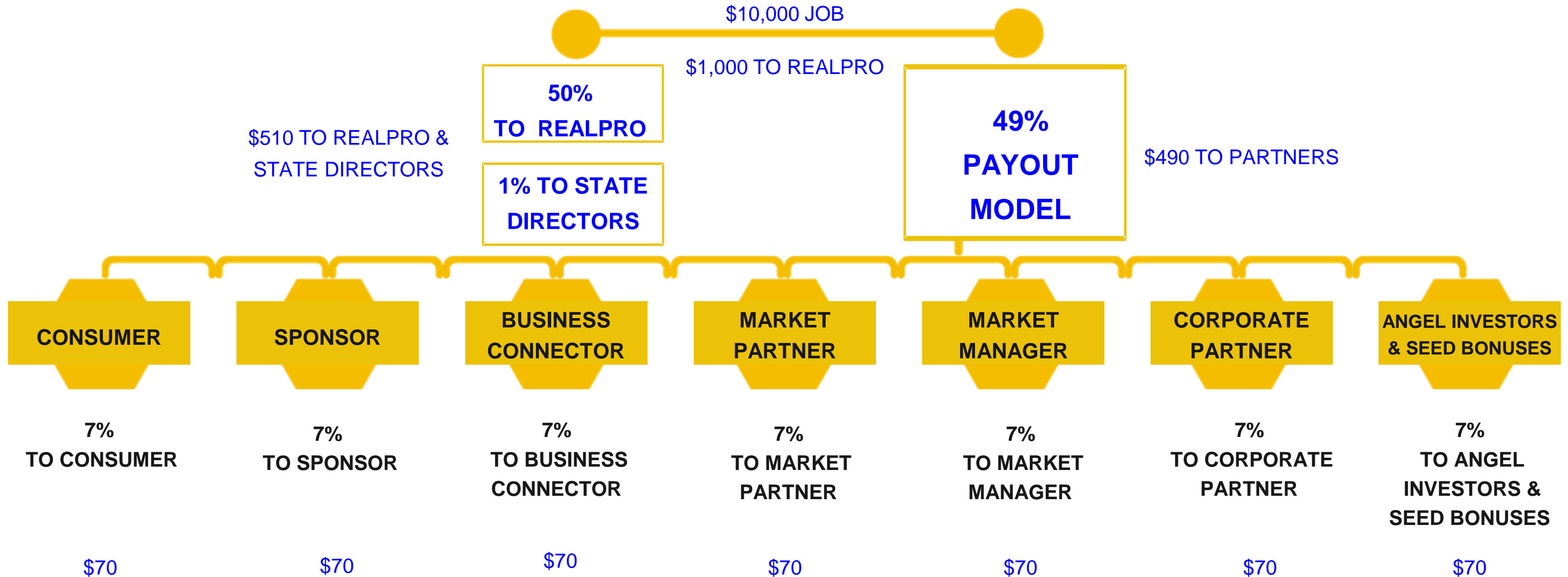
- Sponsor your Market Managers into the network and encourage them to invite their Agents as you build your corporate income tree. Receive a 7% cash back commission match on each purchase done in your Tree.

Investors

- Contact the RealPro Leadership Team to learn about our Investor Opportunities.

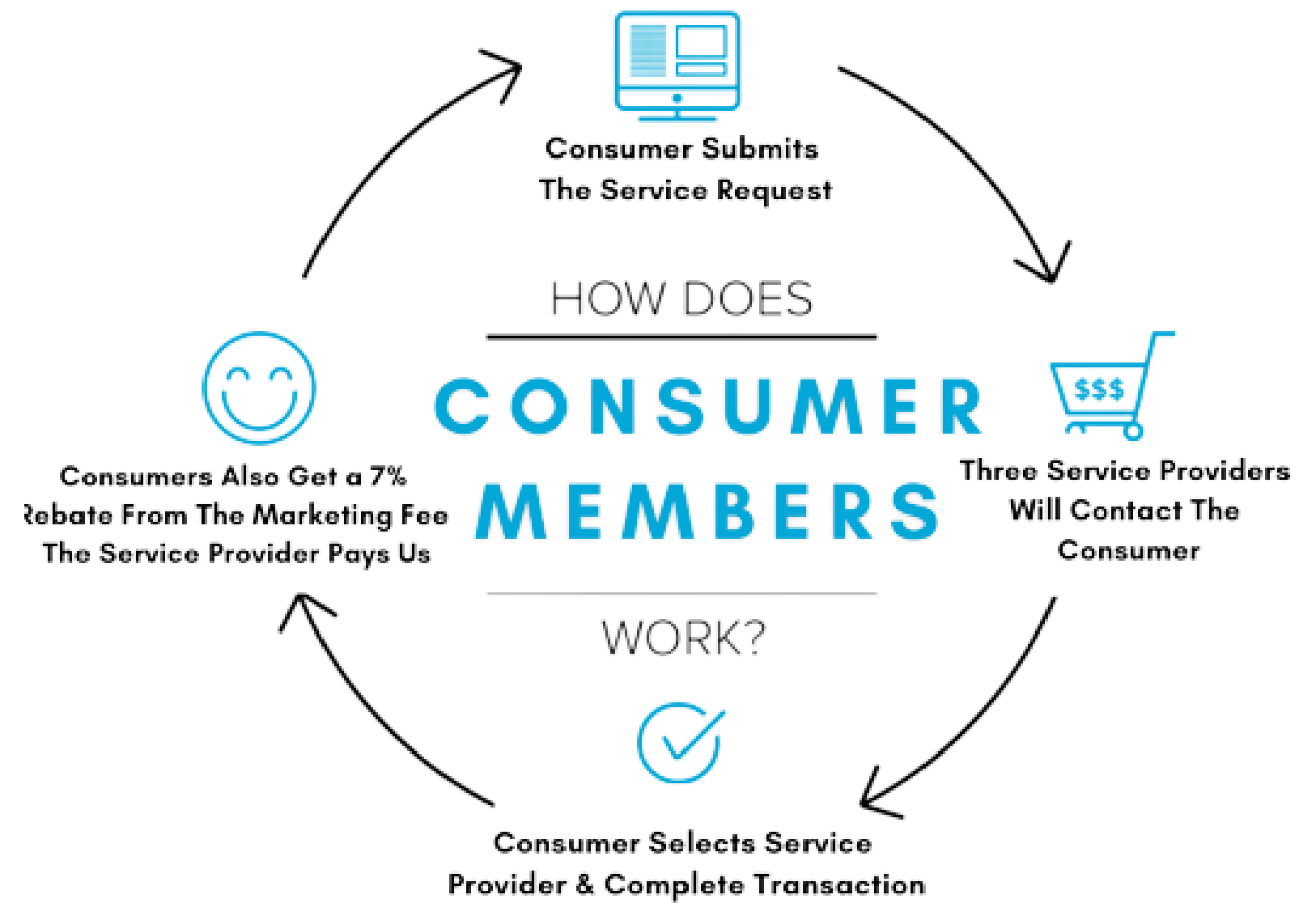


7x7 Income Distribution Plan



Consumers

- Consumers can get bids from multiple providers and have the option to have their payments managed through our secure escrow system. Consumers also get a 7% rebate from the marketing fee received by RealPro Alliance.





Consumer Compensation Example

	ELECTRICIAN	PLUMBER	HOME IMPROVEMENT	ROOFING	DOORS AND WINDOWS	FLOORING
PROJECT COST:	\$1,000	\$2,500	\$25,000	\$10,000	\$5,000	\$5,000
TOTAL REBATE TO CONSUMER:	\$14.00	\$35.00	\$260.50	\$140.00	\$70.00	\$70.00

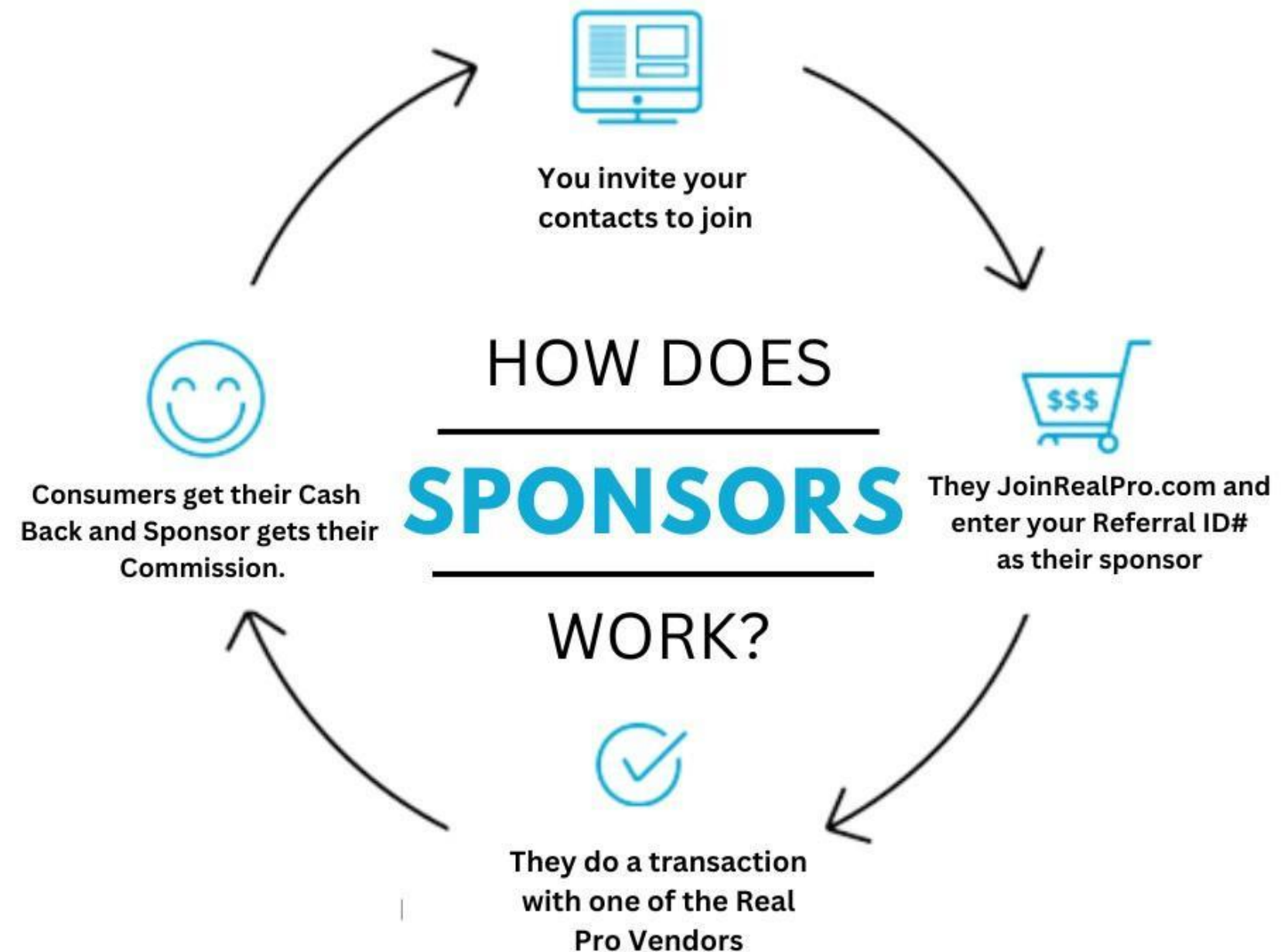
All Numbers are Estimates and the actual number will be 7% of the revenue recieved by RealPro Alliance
 (The more transactions you do the higher your rebate check will be)

* Regulated Industries like Mortgage, Title, Insurance, Attorneys and Financial Planners have industry approved pay out plans



Sponsors

- Sponsor your friends, family, and social media contacts into the network so they can get 7% of our Marketing Fee as Cash Back on their purchases. As their Sponsor, you will also receive a 7% Cash Back Commission Match on every transaction that your contacts make in the network.
- Your contacts must enter your Referral ID# when they sign up, in order for the system to recognize you as their Sponsor.

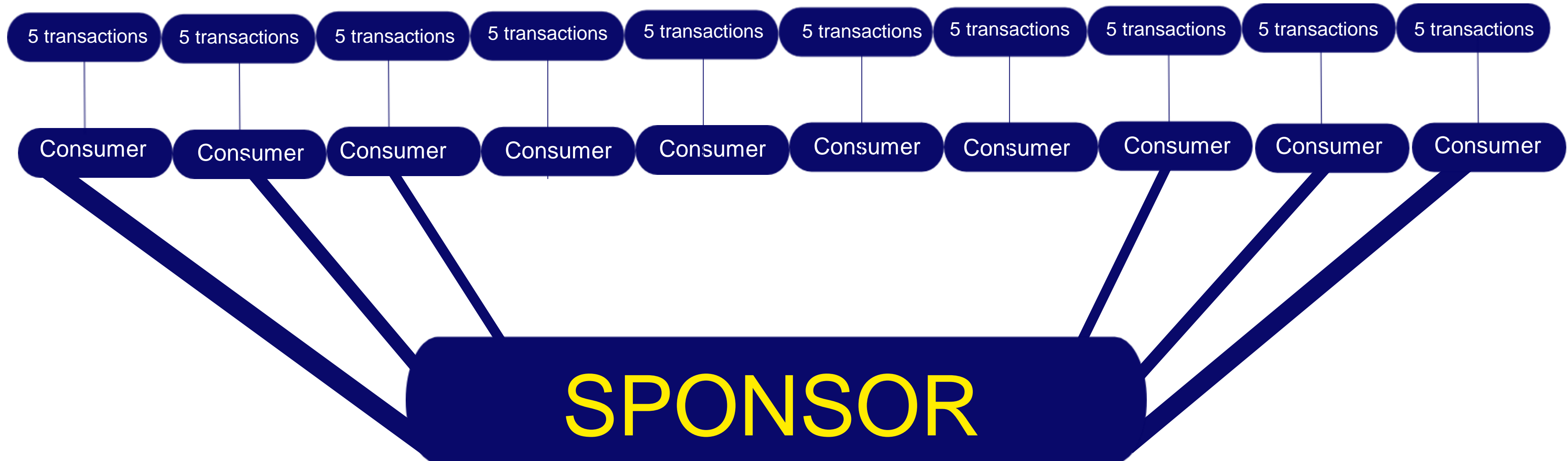


Sponsors Income Example

50 transactions

2500.00 Income (if average commission is 50.00)

The more people you sponsor into the network, the more commissions you will receive.



Business Connector

- As a Business Connector of RealPro Alliance. You are eligible to sign Best in Class companies into the network.
- Once the Service Provider is approved, they will then start receiving leads from RealPro. As a Business Connector, you will receive a 7% cashback commission match on each transaction and every transaction that the service provides completes with one of our Members.

Join As A Business Connector for Free!



- Sign Up local companies to help them to grow and expand their business as you receive commissions from the transactions they do in network



- Sign Up National Service Provider Corporate Office and significantly increase your commission income as you can be compensated on all transactions that the Service Provider does in network, across the entire USA!



Business Connectors Income Projection for Signing Up Service Providers

Business Connectors will receive 7% cashback commission match on each transaction.

For Estimate Purposes only, Assuming the 7% commission is \$35 per transaction.

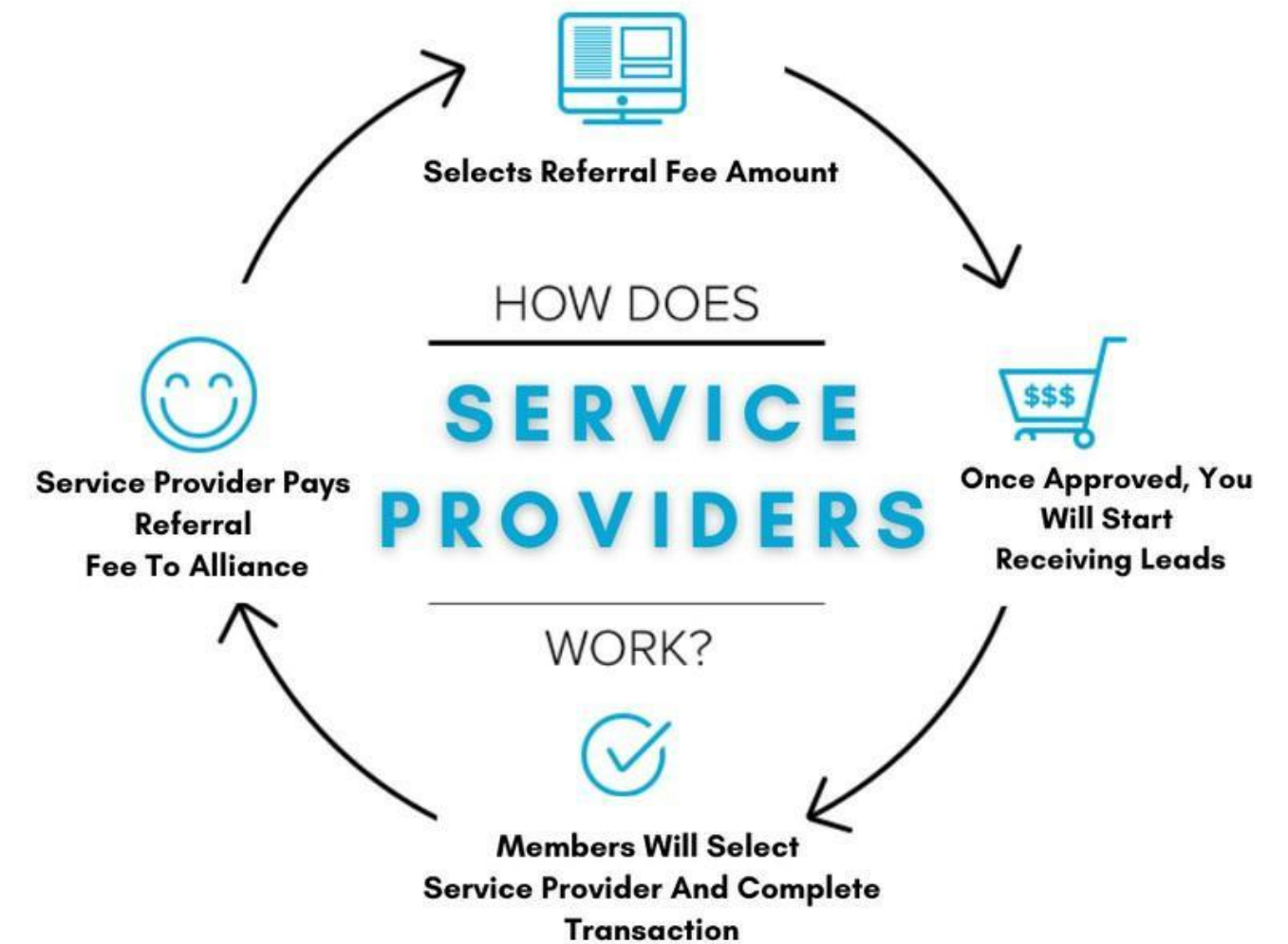


- Sign Up Small Local NSP that does 100 Transaction yr \$3500.00/yr
- Sign Up Large Local NSP that does 500 Transactions yr \$17,500/yr
- Sign Up Statewide NSP that does 2500 Transactions yr \$87,500/yr
- Sign Up Regional NSP that does 5k Transaction yr \$175,000/yr
- Sign Up National NSP that does 10k transactions yr \$350,000/yr

**Business Connectors have Unlimited Income Potential
into 6-7 figures per year**

Service Providers

- It's free to join RealPro Alliance if you are a business in an unregulated industry. Unregulated providers simply pay a referral fee on closed transactions & you choose the %.
- Regulated businesses like Attorneys, Mortgage, Title, Insurance etc. must pay a Monthly fee instead of a referral fee due to the regulatory laws in your industries. The minimum is 100.00 per state and we will promote and refer the top 3 bidders to our members.



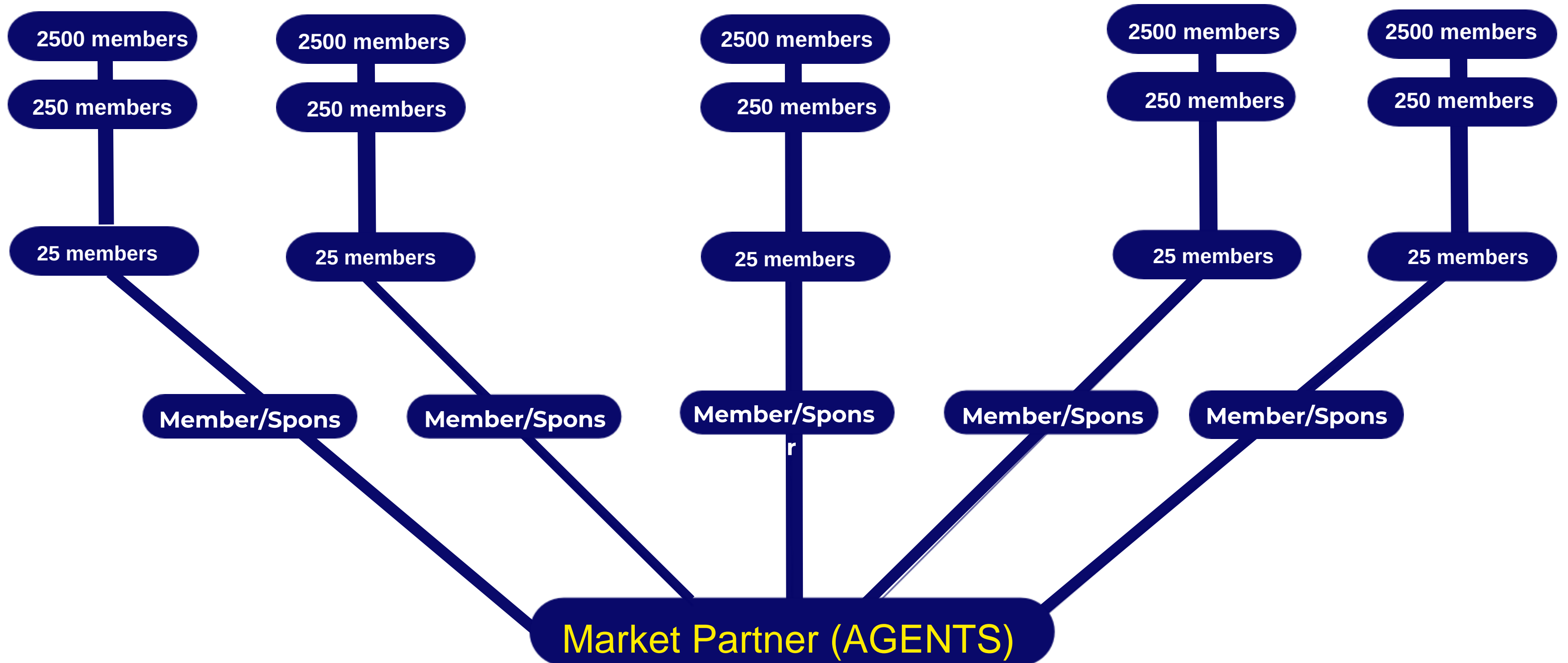
Market Partner (Agents)

- As a Market Partner, you will have the opportunity to refer your friends, family, social media contacts, etc. to join. You are then eligible to receive a commission each and every time they do a transaction in the network.
- Your friend or contact will also receive a “Thank You” rebate on all transactions they do with our Network Service Providers.
- You help them by getting them a rebate on their purchases





Build your Consumer Income Tree





Build your Consumer Income Tree



Build Your Tree to 12,500 Members



**Creating 12,500 RealPro Transaction,
if each member do one transactions a year.**

If Market Partners Average Income Is Appx. \$25.00 per Transaction

Market Partners is Compensated \$25.00 x 12,500 Transactions

Total Compensation To Market Partner is \$312,500

These numbers are hypothetical only. Your results will depend on your level of effort

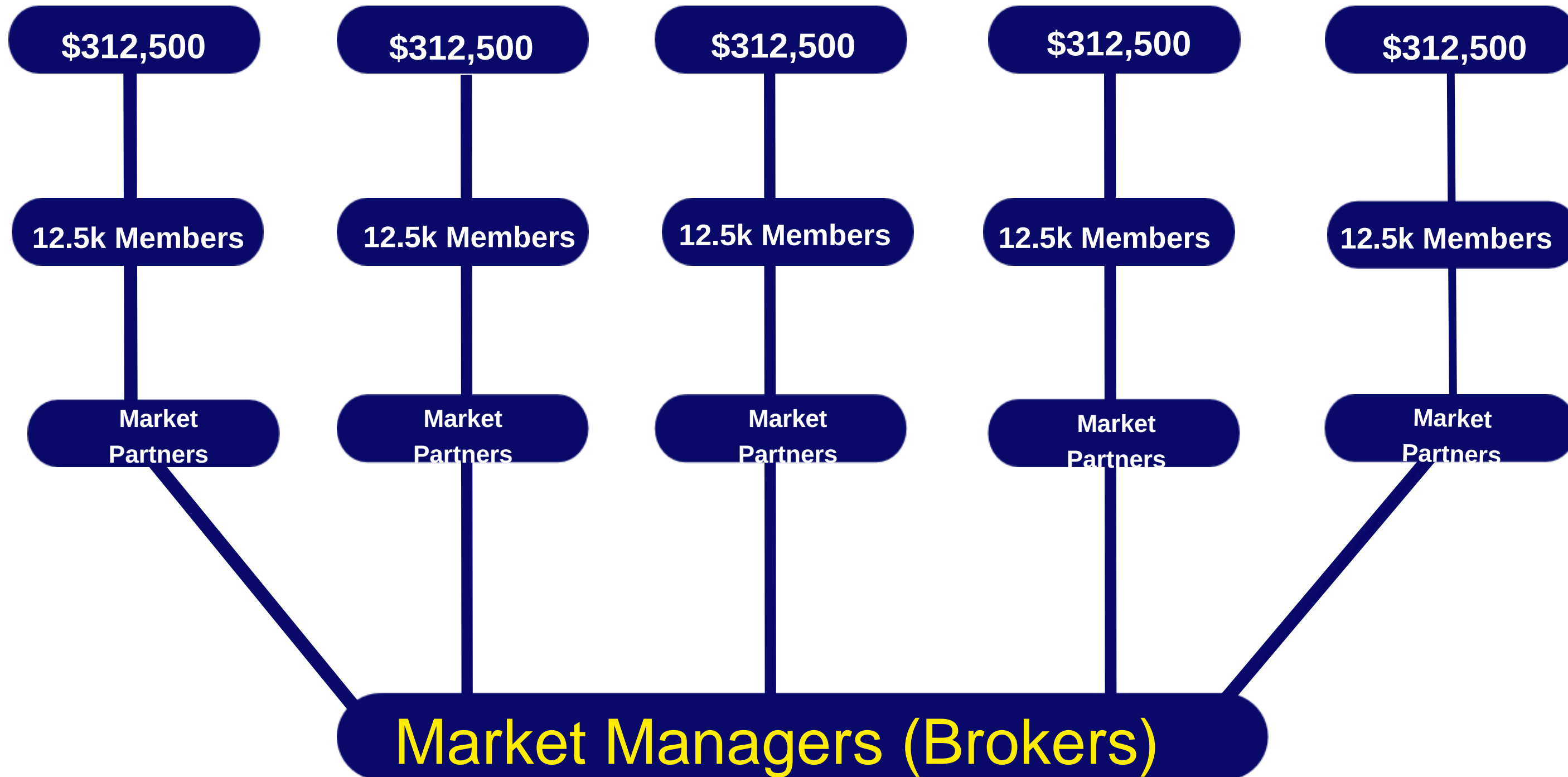
Market Managers (Brokers)

- Market Managers are those that manage a sales team and bring in many Marketing Partners into the Network.
- Our Market Managers bring Market Partners into the Network and earn a commission each time a Consumer in all their Consumer Trees does a transaction in Network. A true win/win as the Consumer gets a Rebate, the Marketing Partner gets a commission and the Market Managers gets a commission when Consumers in their Tree does a Transaction.





Build your Consumer Income Tree



Build Your Consumer Income Tree



- Market Manager signs up 5 Market Partners, each with 12,500 membership tree.
- When each Market Partner earns \$312,500
- Market Manager earns $\$312,500 \times 5$, \$1.56M



Corporate Partners

- Corporate Partners are companies that build or have a staff of Market Manager & Market Partners in their Organization.
- The Corporate Partner will receive commissions on all transactions done by Consumers within the Corporate Tree! This allows the Corporate Partner to be compensated on hundreds of millions of transactions each year, therefore capable of producing a Billion Dollar income to your Corporate Partner Income Tree.



Corporate Partner Consumer Tree Compensation

1



Corporate Partner

has 50,000 Market Partners

2



2500 Market Partner Tree's x \$312,500 per Market Partner

(Top 5 percent of agents)

3



Corporate Partner income Match Projected is \$781 Million

Sponsor your Market Managers into the network and encourage them to invite others as you build your Corporate Income Tree.
Receive a 7% cash back commission match on each purchase done in your Tree

Alliance Foundation

- Alliance Foundation and our Charitable Partners have a strong desire to have a positive impact on the world around us. As a core belief at Alliance Foundation we will support, encourage and give our time & resources to those in need. If you have an IRS Approved 501c3 Charity established, then please register and partner with us today!
- RealPro Alliance will support all the causes that are near and dear to our hearts.



Investor Opportunity

Company Income Goals: 250M in 2024

25000+ Market Partners, 25 Million Consumer Members
& 250,000 Network Service Providers.

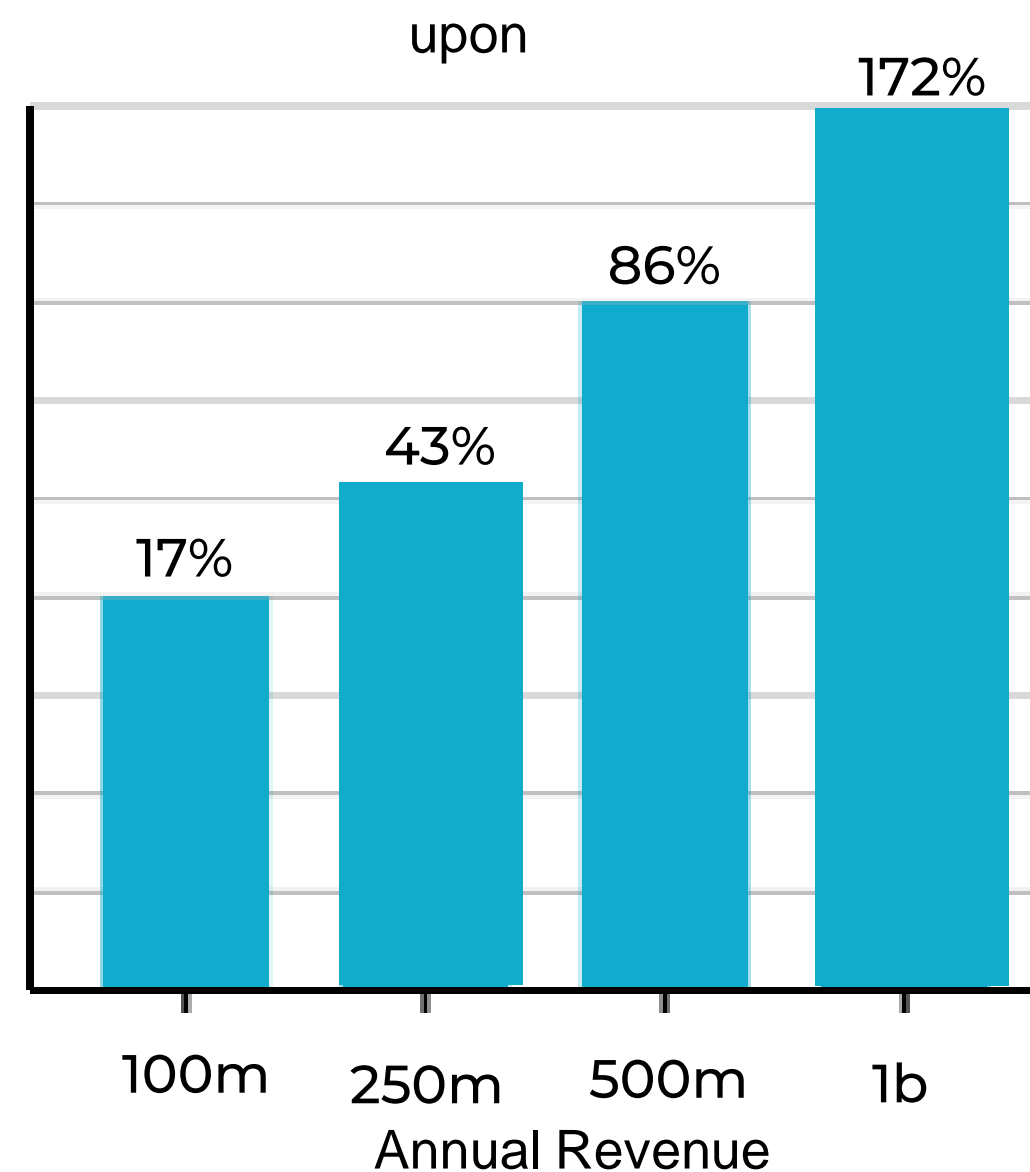
1 Billion in 2025

2.5 Billion in 2026

Example: Company has an Annual Revenue of 250m,
with a net profit of 75m. Each of the 25000 shares would be paid
appx. \$3000.00 per year for your \$7000.00 investment
If the company grows to 1B in annual income then next year, this
could 4x the payouts to 12k per year for your 7k investment.

Invest in RealPro Alliance! We want to Partner with You!
\$7000.00 per Share (1750 of the 25000 shares is currently available)

Investors – This offer has not yet been registered with the
SEC and all information shown are merely projections of
goals and such results cannot be guaranteed or relied



Not only does your investment get a return on investment,
but it also allows the company to provide you with the tools
and income stream opportunities that can earn you millions!
Cement your partnership with RealPro by purchasing your
shares today!



We're Here To Grow Your Business

All members are encouraged to attend our "How to Increase your RealPro Alliance Income!"

Zoom Meeting every Wednesday at 1 pm EST
Please view our Member Benefits video
at JoinRealPro.Com

Subscribe to our Social Media Pages



<https://www.facebook.com/JoinRealPro/>



JoinRealPro.Alliance (Official Channel)



JoinRealPro.Com